

CLUBHOUSE OF DISTINCTION

Double Bay's new clubhouse is a credit to its officials. It cost £7,000 and has 240 members.

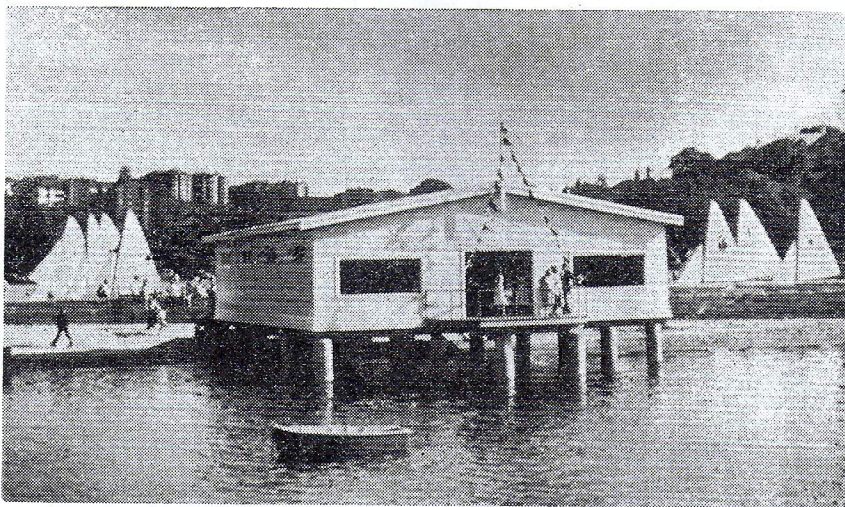
THE Double Bay Sailing Club opened its £7,000 Clubhouse on Sunday, April 5, 1959. The building occupies a portion of the foreshore off Steyne Park, Double Bay, which was obtained on leasehold from the Maritime Services Board. It takes advantage of the natural beauty of the harbour, yet is functional in design.

Amenities are good. The spacious, well-appointed clubroom facing the water has large plate glass windows to preserve the delightful view. Ammenities section for both boys and girls provide hot and cold showers, a private locker for gear, while a modern kitchen adjoins so that hot drinks and food may be served to members after each race. Stowage facilities are provided for 48 boats in the clubhouse, which measures 50 feet long by 40 feet wide.

About 26 Vee Jays race each Sunday, in two divisions, over courses reaching from Vaucluse to Rushcutters Bay.

But this was not always so. In the beginning a band of keen youngsters formed the original "Pioneer Boat Club" but ammenities were nil. Club meetings were held in Double Bay Park and their keenness so impressed residents and many parents, too, that the grown-ups decided to do something to help. They persuaded the lads to reform the club and rules were drawn up to regulate meetings and sailing races. Thus the Double Bay Sailing Club was formed at the inaugural meeting on July 13, 1956.

Right from its inception, emphasis was placed on teaching the young to sail. Today the club holds a unique



The Double Bay Sailing Club from the waters of the bay. Jays are rigged in Steyne Park, which adjoins the clubhouse. This club is very close to the heart of the most thickly populated area in Australia — Kings Cross.

position among other Vee Jay clubs in the Sydney Harbour/Pittwater Zone . . . almost 35 per cent. of its 240 members are under 14 years of age!

Although Woollahra Council had 10 miles of foreshore under its jurisdiction, only two amateur sailing clubs for small craft had been allowed. Both of these are at the eastern end of the district. Naturally, the help of the Woollahra Council was sought in the early efforts to establish the clubhouse.

Residents living close to the pro-

posed building site were petitioned to obtain their names to the plan and with few exceptions most signed. A petition of 180 names was submitted to the council in February, 1958.

Some of the objectors later rallied sufficient support from other areas of the municipality and presented a counter-petition to the council. This had the effect of delaying building operations for about six weeks and even threatened at one stage to stop construction of the clubhouse altogether, in spite of the fact that piles had already been driven into position.

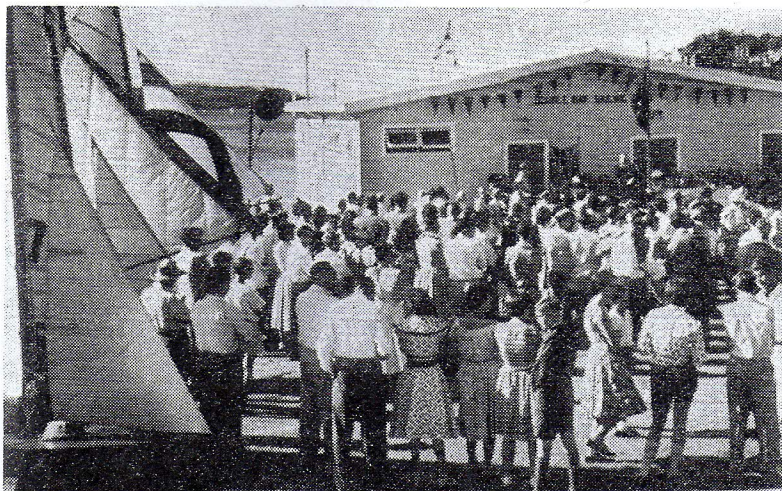
Finance was raised through a "Parents' Meeting" by a system of interest-free loans. Work started on the building in August, 1958. Well-known 18-foot Sailing League skipper, Cliff Monkhouse, built the clubhouse. His know-how and appreciation of a boatshed's requirements helped cut costs to a minimum.

Two of the club's oldest stalwarts are "Old Salts" — Reg Slight and John Backhouse. They have watched over the welfare of the lads during their races. Towing in distressed craft, once the order of the day, now is a rarity and these two stalwarts can look with pride at the growing proficiency of the crews.

The club's president, Charles Messenger, takes his *Lady Dudley* or the well-known launch *Mackerel* out loaded almost to the gunwale with spectators and follows the races every Sunday.

Double Bay Sailing Club has a fine clubhouse, a fine Ladies' Auxiliary and a bright future. ●

A large crowd listened to the speakers on opening day. The modern clubhouse reflects the interest of locals in the welfare of the district's youngsters. Vee Jays are sailed in two divisions.



Boatel
VICASAO - HL

stel" which
outboard
travel. Such
of private
plans and
rk National

mile en-
president
certainly
depend-
sion for
greatest

landpoint,
ectness of
go to fol-
ore, short
her than
f's or even
d three-
l of which
ted years
types ap-
arket. We
ne to give
cord. Our
e and six-
deliberate,
r choice!"

*
many-fea-
ew kind of
r private
e unveiled
major out-

of Scott-
o., Minne-
nufacturer,
ed specifi-
commoda-
travel by
waterways

page 51)